

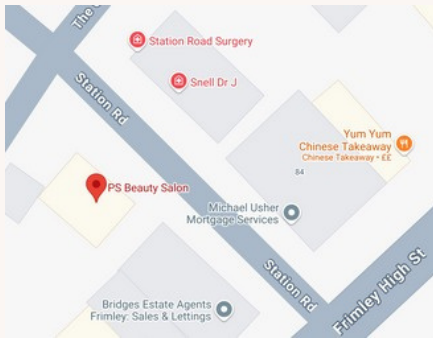
LADIES HAIR

Shampoo & cut starts from	£30
Shampoo, cut & blow dry starts from	£50
Wash & blow dry starts from	£30
Trim starts from	£20
Fringe cut	£7
Hair up	£30
Straight/curl starts from	£15

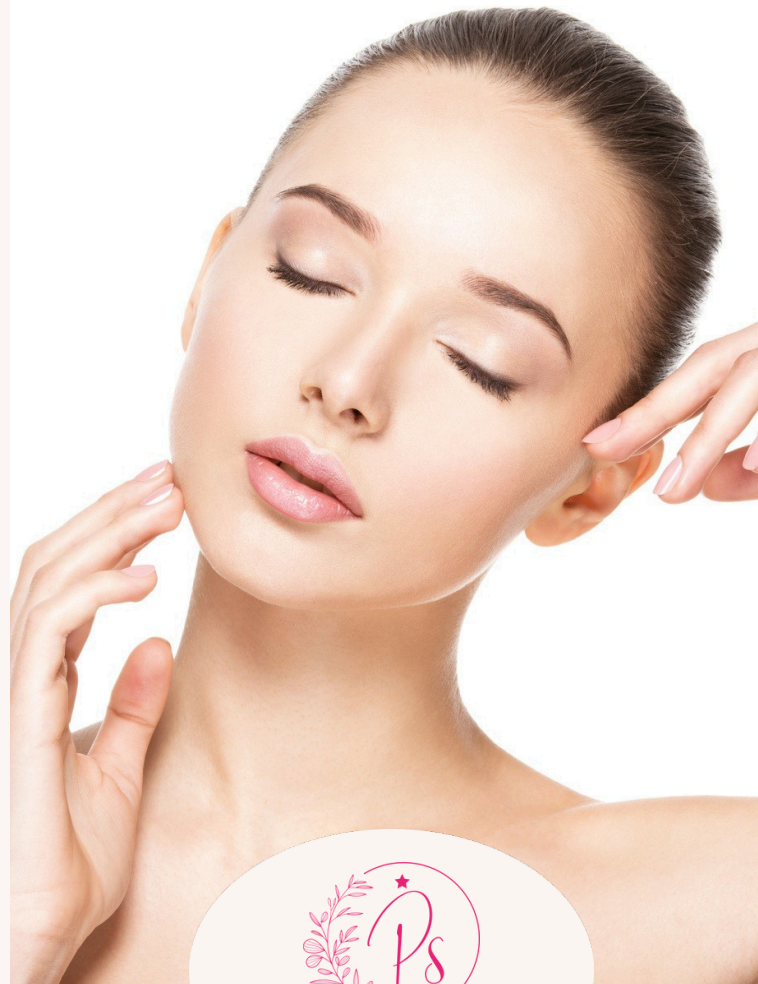
COLOURING

Root Tint	£35
Full Head Colour	£50
Full Head Highlights	£95
Half Head Highlights	£55
Tint and Highlights	£105
Toner / Treatments	£20


Prices may vary depending on the length and quality of hair



1A STATION ROAD, FRIMLEY, GU16 7JA



OPENING HOURS
TUE TO SAT: 9:30 TO 6 PM
SUN: 11 TO 4 PM
PSBS24@YAHOO.COM

 +44 788 638 6502

 PS.BEAUTY.FRIMLEY

Bookings require a 20% deposit. Full refund available for cancellations made 48+ hours in advance.

THREADING

Eyebrow Threading	£8
Upper Lip	£4
Lower Lip	£4
Side Face	£7
Forehead	£5
Chin	£7
Neck	£8
Full Face (incl. eyebrows)	£25
Full Face (incl. eyebrows & neck)	£30

EYE TREATMENT

Eyebrows Tint	£10
Eyelash Tint	£14
Eyelash Lift with Tint	£40
Eyebrow Lamination	£40

EYELASH EXTENSIONS

Eyeshash Extensions Classic (1h30m)	£50
Russian Volume (2h30)	£65
Mega volume (2h30)	£75
Hybrid (2h)	£60
Cluster Semi-permanent (30m)	£25
Infll Lash Start from (45m)	£25
Infll Lash hybrid Start from (45m)	£35
Remove Start from (45m)	£20

*First time for all eye treatment and eyelash extension
will require 24 hours patch test*

WAXING

Eyebrows	£10
Lower lip	£6
Upper lip	£6
Side	£8
Chin	£7
Neck	£8
Full face inc. eyebrows	£30
Full leg	£30
Half leg	£15
Full arm	£25
Half arm	£15
Under arm	£12
¾ leg	£20
Shoulder	£20
Back wax	£20
Hollywood	£40
Brazilian	£35
Bikini	£15
Stomach	£15
Full body wax	£65
(Full legs, full arms, bikini line and underarms)	
Full body and Hollywood	£110
(Full legs, full arms, Hollywood, stomach and underarms)	
Men Full Back Wax	£30

ELEMIS FACIAL

Mini Express Facial (20 mins) (Cleanser, toner, exfoliate, massage)	£25
Deep Cleanse (40 mins) (Cleanser, toner, exfoliate mask and massage)	£50
Deluxe facial (Pro- collagen facial)(60mins) (Cleanser, toner, steam, exfoliate, luxury mask and massage)	£70

ATOMY FACIAL

Mini Express Facial (20 mins) (Cleanser, toner, exfoliate, massage)	£20
Deep Cleanse (40 mins) (Cleanser, toner, exfoliate mask and massage)	£45
Deluxe Facial (Pro- collagen facial)(60mins) (Cleanser, toner, steam, exfoliate, luxury mask and massage)	£60

*Using ATOMY's CELLACTIVE and THEFAME range,
a Korean skincare brand*

MASSAGE

Swedish Body Massage (60 mins)	£50
Deep Tissue Massage (45mins)	£50
Deep Tissue Massage (60 mins)	£60
Back and Shoulder (30 mins)	£30
Indian Head Massage (30 mins)	£25

NAILS

File & paint	£15
File & paint toe nails	£20
Manicure with normal colour	£25
Pedicure with normal colour	£30
Manicure with gel	£30
Pedicure with gel	£35
French manicure	£35
French pedicure	£40
Inail Extension + Gel	£45
Pedicure + Gel + removal	£45
Manicure + Gel + removal	£40
Pedicure and manicure with gel	£60